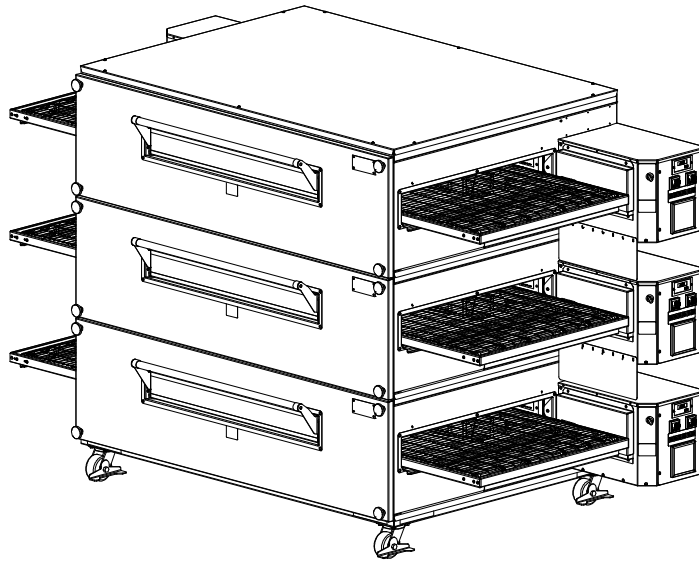




Simple. Smart.



Parts Manual
Australian and S&W Gas Ovens
(Standard & World Models)

XD-9012-S&W
Rev A 12/2009
©2009 Wolfe Electric, Inc.



Intertek

0359



Intertek

N4279



Wolfe Electric, Inc
PO BOX 9090
Wichita, KS 67277-0090
USA
Phone: 1-888-443-2751
Fax: 1-316-943-2769
www.xltovens.com

This page was left
blank intentionally

Table of Contents

Table of Contents	2
1 Natural Gas and Propane Ovens	3
1.1 Quiet Fire Burner, Standard Spare Parts	3
1.2 Quiet Fire Burner, Standard Spare Parts, BOM.....	4
1.3 Quiet Fire Burner, World Spare Parts	5
1.4 Quiet Fire Burner, World Spare Parts BOM.....	6
1.5 Direct Ignition Burner, Standard Spare Parts	7
1.6 Direct Ignition Burner, Standard Spare Parts BOM	8
1.7 Direct Ignition Burner, World Spare Parts	9
1.8 Direct Ignition Burner, World Spare Parts BOM	10
1.9 Direct Ignition Burner, Australian Spare Parts	11
1.10 Direct Ignition Burner, Australia Spare Parts BOM.....	12
2.1 Orifice chart for Direct Ignition & Quiet Fire Burners.....	13
2.2 Orifice Chart for Direct Ignition Burners (Australia only).....	14
3 Finger Configurations	15
3.1 Finger Outer Covers.....	16
3.2 Finger Arrangements	17
4 Accessories	18
4.1 Accessories: Crumb Trays, Conveyor Flaps, Product Stops	18
4.2 Accessories: False Front, Conveyor shelves, Control Box Plates, etc.....	19
4.3 Accessories: Sandwich Door, Front Panel Knob, Conversion Kits, etc	20
4.4 Accessories: Fan Assemblies.....	21
4.5 Accessories: Restraint Kits, Caster, Gas Hose Assy's.....	22
4.6 Sandwich Door Assembly Breakdown	23
5 Gas Conversion Kits	24
5.1 Convert From Natural Gas to Propane Gas (Quiet Fire Burner)	24
5.2 Convert from Propane Gas to Natural Gas (Quiet Fire Burner)	24
5.3 Gas Conversion Kits for (Direct Ignition Burner-Australia)	25

For Components not shown, contact: Wolfe Electric, Inc. Customer Service at 1-888-443-2751

1 Natural Gas and Propane Ovens

1.1 Quiet Fire Burner, Standard Spare Parts

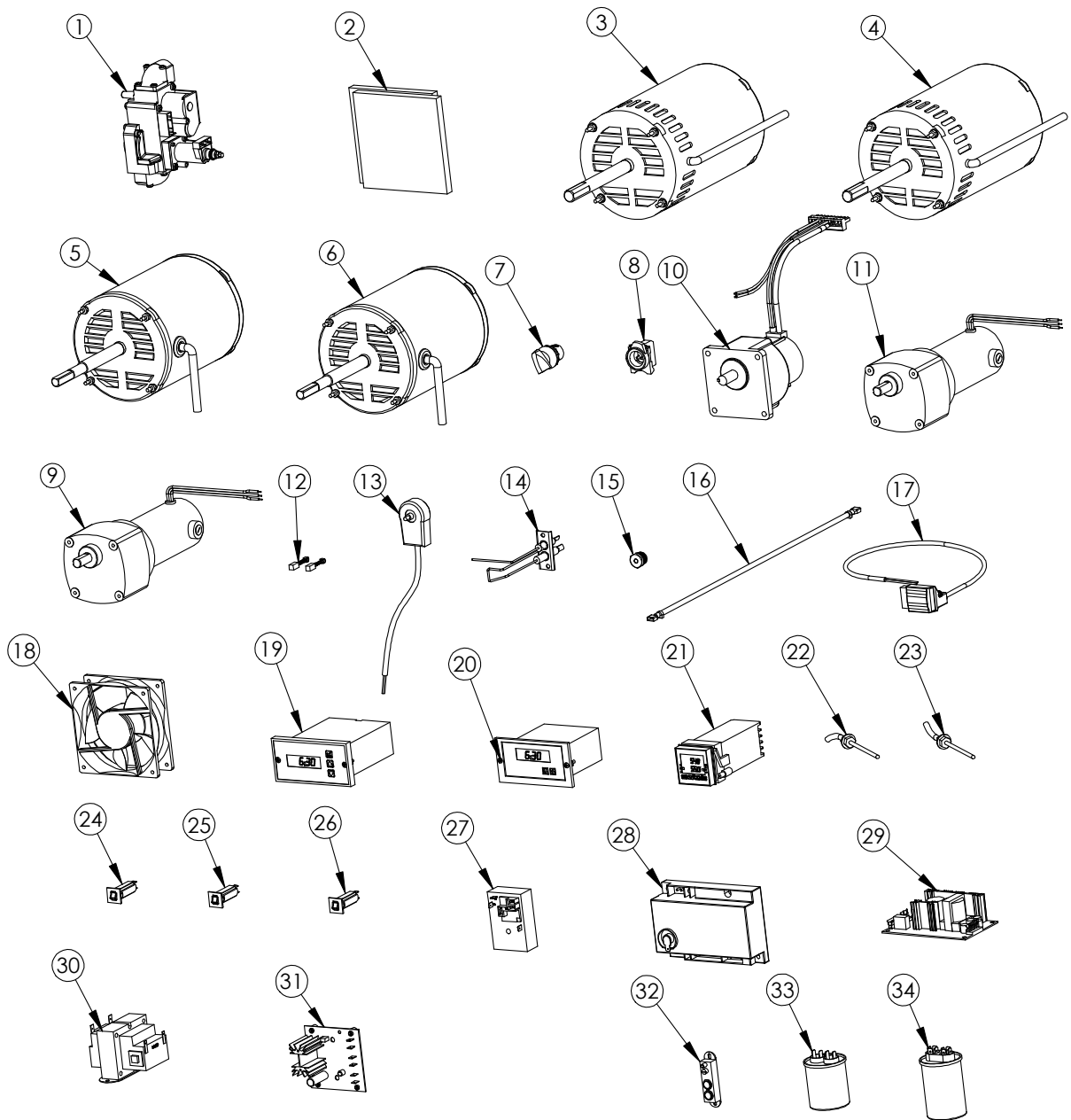


Figure 1: Quiet Fire Burner, Standard Spare Parts

1.2 Quiet Fire Burner, Standard Spare Parts, BOM

QUANTITIES ARE PER OVEN

ITEM NO.	PART NUMBER	DESCRIPTION	1832/2440/ 3240/3255/ 3270S/3855 NAT GAS	1832/2440/ 3240/3255/ 3270S/3855 PROP	3270/3870 NAT GAS	3270/3870 PROP
1	XA-4207-DI	COMBINATION GAS VALVE DI	1	1	2	2
2	XA-4504-20	FOAM FAN FILTERS (PKG OF 2)	1	1	2	2
3	XA-5016 (.75HP)-CCW	3/4HP MOTOR (CCW) ASSY.	1	1	1	1
4	XA-5016 (.75HP)-CW	3/4HP MOTOR (CW) ASSY.	--	--	1	1
5	XA-5016-CCW-S (.33HP)	1/3HP CCW MOTOR ASSY	1	1	1	1
6	XA-5016-CW-S (.33HP)	1/3HP MOTOR CW ASSY	--	--	1	1
7	XP-4101	SWITCH OPERATOR W/ NUT	1	1	1	1
8	XP-4102-1	CONTACT BLOCK, 1 POLE	1	1	1	1
9	XP-4117-05	CONVEYOR MOTOR, 5 RPM	1	1	1	1
10	XP-4117-12.5	CONVEYOR MOTOR 12.5 RPM	1*	1*	1*	1*
11	XP-4117-19	CONVEYOR MOTOR, 19 RPM	1**	1**	1**	1**
12	XP-4118	BRUSH KIT, BISON	1*	1*	1*	1*
13	XP-4120	CONVEYOR MOTOR PICK-UP	1*	1*	1*	1*
14	XP-4203-DI-T3	DSI IGNITER/SENSOR ASSY	1	1	2	2
15	XP-4209-xxxx	ORIFICE, MAIN,	SEE ORIFICE CHART	SEE ORIFICE CHART	SEE ORIFICE CHART	SEE ORIFICE CHART
16	XP-4234-1	WIRE, SPARK, DI	1	1	2	2
17	XP-4235	RECTIFIER PLUG	1	1	2	2
18	XP-4501-US	FLOW PATH PRESSURE GENERATING FAN DOM	1	1	2	2
19	XP-4507	CONVEYOR CONTROL	1*	1*	1*	1*
20	XP-4507-24-A	CONVEYOR SPEED CONTROL 24VDC	1*	1*	1*	1*
21	XP-4508	TEMPERATURE CONTROL GAS	1	1	2	2
22	XP-4509	THERMOCOUPLE, TYPE K, 48 INCH	1	1	1	1
23	XP-4510	THERMOCOUPLE, TYPE K, 105 INCH	--	--	1	1
24	XP-4515-CB-15A	15 AMP CIRCUIT BREAKER	1	1	2	2
25	XP-4515-CB-1A	1 AMP CIRCUIT BREAKER	1	1	1	1
26	XP-4515-CB-2A	2 AMP CIRCUIT BREAKER	4	4	6	6
27	XP-4704-US	COOL DOWN TIMER, DOMESTIC	1	1	1	1
28	XP-4705-DI-EX	IGNITION CONTROL DI EXPORT	1	1	2	2
29	XP-4706-PS1	POWER SUPPLY	1	1	1	1
30	XP-4706-US	TRANSFORMER, 24V 60VA, DOM	1	1	1	1
31	XP-4710-DI	SIGNAL CONDITIONER DI	1	1	2	2
32	XP-4713	SWITCH, LIMIT, HIGH TEMP, EX	1	1	2	2
33	XP-5014-2	12 MFD CAPACITOR	1	1	2	2
34	XP-5014-3	SH P2 CAPACITOR	1	1	2	2

* (2 EA) OF THESE PARTS IF THE OVEN HAS A SPLIT BELT CONVEYOR.

** The XM-4117-19 IS USED ON THE SPLIT BELT OVEN WITH THE XM-4117-05.

Figure 2: Quiet Fire Burner, Standard Spare Parts, BOM

Item numbers 3 & 4 fan motors are not interchangeable with item numbers 5 & 6 fan motors. Verify which motor you have before ordering a replacement part. Item number 34 is used with item numbers 3 & 4 and item number 33 is used with item numbers 5 & 6.

Item numbers 12, 13 & 19 are used with the Bison conveyor motors, (item numbers 9 & 11) and item numbers 20 & 29 are used with the Brother conveyor motor, (item number 10). Verify which conveyor motor you have before ordering any of these replacement parts.

1.3 Quiet Fire Burner, World Spare Parts

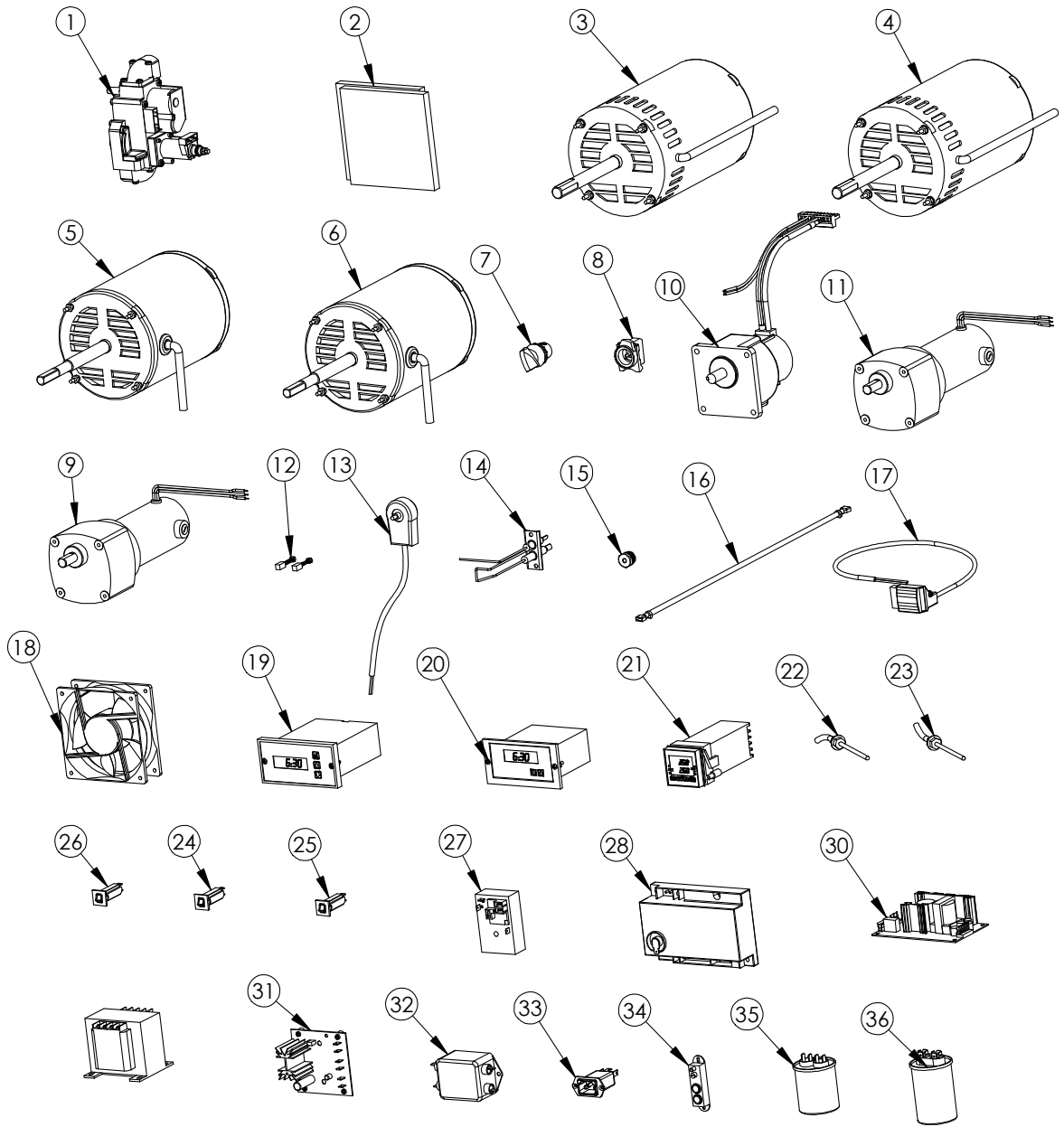


Figure 3: Quiet Fire Burner, World Spare Parts

1.4 Quiet Fire Burner, World Spare Parts BOM

ITEM NO.	PART NUMBER	DESCRIPTION	QUANTITIES ARE PER OVEN			
			1832/2440/ 3240/3255/ 3270S/3855 NAT GAS	1832/2440/ 3240/3255/ 3270S/3855 PROP	3270/3870 NAT GAS	3270/3870 PROP
1	XA-4207-DI	COMBINATION GAS VALVE DI	1	1	2	2
2	XA-4504-20	FOAM FAN FILTERS (PKG OF 2)	1	1	2	2
3	XA-5016 (.75HP)-CCW	3/4HP MOTOR (CCW) ASSY.	1	1	1	1
4	XA-5016 (.75HP)-CW	3/4HP MOTOR (CW) ASSY.	--	--	1	1
5	XA-5016-CCW-S (.33HP)	1/3HP CCW MOTOR ASSY	1	1	1	1
6	XA-5016-CW-S (.33HP)	1/3HP MOTOR CW ASSY	--	--	1	1
7	XP-4101	SWITCH OPERATOR W/ NUT	1	1	1	1
8	XP-4102-1	CONTACT BLOCK, 1 POLE	1	1	1	1
9	XP-4117-05	CONVEYOR MOTOR, 5 RPM	1	1	1	1
10	XP-4117-12.5	CONVEYOR MOTOR 12.5 RPM	1*	1*	1*	1*
11	XP-4117-19	CONVEYOR MOTOR, 19 RPM	1**	1**	1**	1**
12	XP-4118	BRUSH KIT, BISON	1*	1*	1*	1*
13	XP-4120	CONVEYOR MOTOR PICK-UP	1*	1*	1*	1*
14	XP-4203-DI-T3	DSI IGNITER/SENSOR ASSY	1	1	2	2
15	XP-4209-xxxx	ORIFICE, MAIN,	SEE ORIFICE CHART	SEE ORIFICE CHART	SEE ORIFICE CHART	SEE ORIFICE CHART
16	XP-4234-1	WIRE, SPARK, DI	1	1	2	2
17	XP-4235	RECTIFIER PLUG	1	1	2	2
18	XP-4501-EX	FLOW PATH PRESSURE GENERATING FAN EX	1	1	2	2
19	XP-4507	CONVEYOR CONTROL	1*	1*	1*	1*
20	XP-4507-24-A	CONVEYOR SPEED CONTROL 24VDC	1*	1*	1*	1*
21	XP-4508	TEMPERATURE CONTROL GAS	1	1	2	2
22	XP-4509	THERMOCOUPLE, TYPE K, 48 INCH	1	1	1	1
23	XP-4510	THERMOCOUPLE, TYPE K, 105 INCH	--	--	1	1
24	XP-4515-CB-10A	10 AMP CIRCUIT BREAKER	1	1	2	2
25	XP-4515-CB-1A	1 AMP CIRCUIT BREAKER	1	1	2	2
26	XP-4515-CB-2A	2 AMP CIRCUIT BREAKER	4	4	6	6
27	XP-4704-EX	COOL DOWN TIMER, EXPORT	1	1	1	1
28	XP-4705-DI-EX	IGNITION CONTROL DI EXPORT	1	1	2	2
29	XP-4706-EX	24V 75VA TRANSFORMER EXPORT	1	1	2	2
30	XP-4706-PS1	POWER SUPPLY	1	1	1	1
31	XP-4710-DI	SIGNAL CONDITIONER DI	1	1	2	2
32	XP-4711	FILTER, PWR, CONT, CNVR, EX	1	1	1	1
33	XP-4712	FILTER, POWER, INLET, EX	1	1	1	1
34	XP-4713	SWITCH, LIMIT, HIGH TEMP, EX	1	1	2	2
35	XP-5014-2	12 MFD CAPACITOR	1	1	2	2
36	XP-5014-3	SH P2 CAPACITOR	1	1	2	2

*(2 EA) OF THESE PARTS IF THE OVEN HAS A SPLIT BELT CONVEYOR.
 **The XM-4117-19 IS USED ON THE SPLIT BELT OVEN WITH THE XM-4117-05.

Figure 4: Quiet Fire Burner, World Spare Parts BOM

Item numbers 3 & 4 fan motors are not interchangeable with item numbers 5 & 6 fan motors. Verify which motor you have before ordering a replacement part. Item number 36 is used with item numbers 3 & 4 and item number 35 is used with item numbers 5 & 6.

Item numbers 12, 13 & 19 are used with the Bison conveyor motors, (item numbers 9 & 11) and item numbers 20 & 30 are used with the Brother conveyor motor, (item number 10). Verify which conveyor motor you have before ordering any of these replacement parts.

1.5 Direct Ignition Burner, Standard Spare Parts

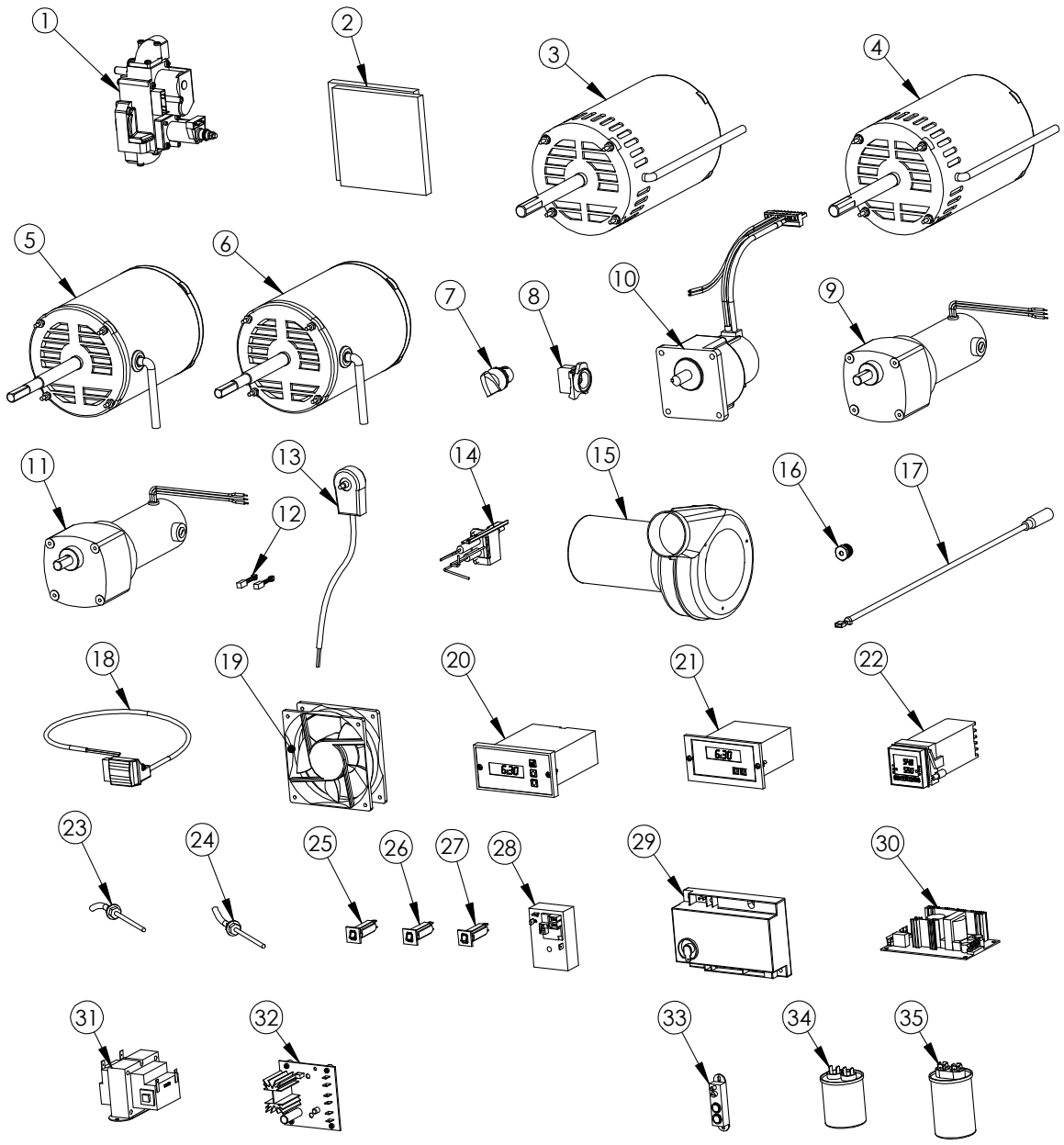


Figure 5: Direct Ignition Burner, Standard Spare Parts

1.6 Direct Ignition Burner, Standard Spare Parts BOM

QUANTITIES ARE PER OVEN

ITEM NO.	PART NUMBER	DESCRIPTION	1832/2440/ 3240/3255/ 3270S/3855 NAT GAS	1832/2440/ 3240/3255/ 3270S/3855 PROP	3270/3870 NAT GAS	3270/3870 PROP
1	XA-4207-DI	COMBINATION GAS VALVE DI	1	1	2	2
2	XA-4504-20	FOAM FAN FILTERS (PKG OF 2)	1	1	1	1
3	XA-5016 (.75HP)-CCW	3/4HP MOTOR (CCW) ASSY.	1	1	1	1
4	XA-5016 (.75HP)-CW	3/4HP MOTOR (CW) ASSY.	--	--	1	1
5	XA-5016-CCW-W (.33HP)	1/3HP MOTOR CCW ASSY	1	1	1	1
6	XA-5016-CW-W (.33HP)	1/3HP MOTOR CW ASSY	--	--	1	1
7	XP-4101	SWITCH OPERATOR W/ NUT	1	1	1	1
8	XP-4102-1	CONTACT BLOCK, 1 POLE	1	1	1	1
9	XP-4117-05	CONVEYOR MOTOR, 5 RPM	1	1	1	1
10	XP-4117-12.5	CONVEYOR MOTOR 12.5 RPM	1*	1*	1*	1*
11	XP-4117-19	CONVEYOR MOTOR, 19 RPM	1**	1**	1**	1**
12	XP-4118	BRUSH KIT, BISON	1*	1*	1*	1*
13	XP-4120	CONVEYOR MOTOR PICK-UP	1*	1*	1*	1*
14	XP-4203-DI	DSI IGNITER/SENSOR ASSY	1	1	2	2
15	XP-4205-US	COMB AIR MOTOR ASSY	1	1	2	2
16	XP-4209-xxxx	ORIFICE, MAIN,	SEE ORIFICE CHART	SEE ORIFICE CHART	SEE ORIFICE CHART	SEE ORIFICE CHART
17	XP-4234	SPARK WIRE, SHORT	1	1	2	2
18	XP-4235	RECTIFIER PLUG	1	1	2	2
19	XP-4501-US	FLOW PATH PRESSURE GENERATING FAN DOM	1	1	2	2
20	XP-4507	CONVEYOR CONTROL	1*	1*	1*	1*
21	XP-4507-24-A	CONVEYOR SPEED CONTROL 24VDC	1*	1*	1*	1*
22	XP-4508	TEMPERATURE CONTROL GAS	1	1	2	2
23	XP-4509	THERMOCOUPLE, TYPE K, 48 INCH	1	1	1	1
24	XP-4510	THERMOCOUPLE, TYPE K, 105 INCH	--	--	1	1
25	XP-4515-CB-15A	15 AMP CIRCUIT BREAKER	1	1	2	2
26	XP-4515-CB-1A	1 AMP CIRCUIT BREAKER	1	1	1	1
27	XP-4515-CB-2A	2 AMP CIRCUIT BREAKER	4	4	6	6
28	XP-4704-US	COOL DOWN TIMER, DOMESTIC	1	1	1	1
29	XP-4705-DI-EX	IGNITION CONTROL DI EXPORT	1	1	2	2
30	XP-4706-PS1	POWER SUPPLY	1	1	1	1
31	XP-4706-US	TRANSFORMER, 24V 60VA, DOM	1	1	2	2
32	XP-4710-DI	SIGNAL CONDITIONER DI	1	1	2	2
33	XP-4713	SWITCH, LIMIT, HIGH TEMP, EX	1	1	2	2
34	XP-5014-2	12 MFD CAPACITOR	1	1	2	2
35	XP-5014-3	SH P2 CAPACITOR	1	1	2	2

* (2 EA) OF THESE PARTS IF THE OVEN HAS A SPLIT BELT CONVEYOR.

** The XM-4117-19 IS USED ON THE SPLIT BELT OVEN WITH THE XM-4117-05.

Figure 6: Direct Ignition Burner, Standard Spare Parts BOM

Item numbers 3 & 4 fan motors are not interchangeable with item numbers 5 & 6 fan motors. Verify which motor you have before ordering a replacement part. Item number 36 is used with item numbers 3 & 4 and item number 34 is used with item numbers 5 & 6.

Item numbers 12, 13 & 20 are used with the Bison conveyor motors, (item numbers 9 & 11) and item numbers 21 & 30 are used with the Brother conveyor motor, (item number 10). Verify which conveyor motor you have before ordering any of these replacement parts.

1.7 Direct Ignition Burner, World Spare Parts

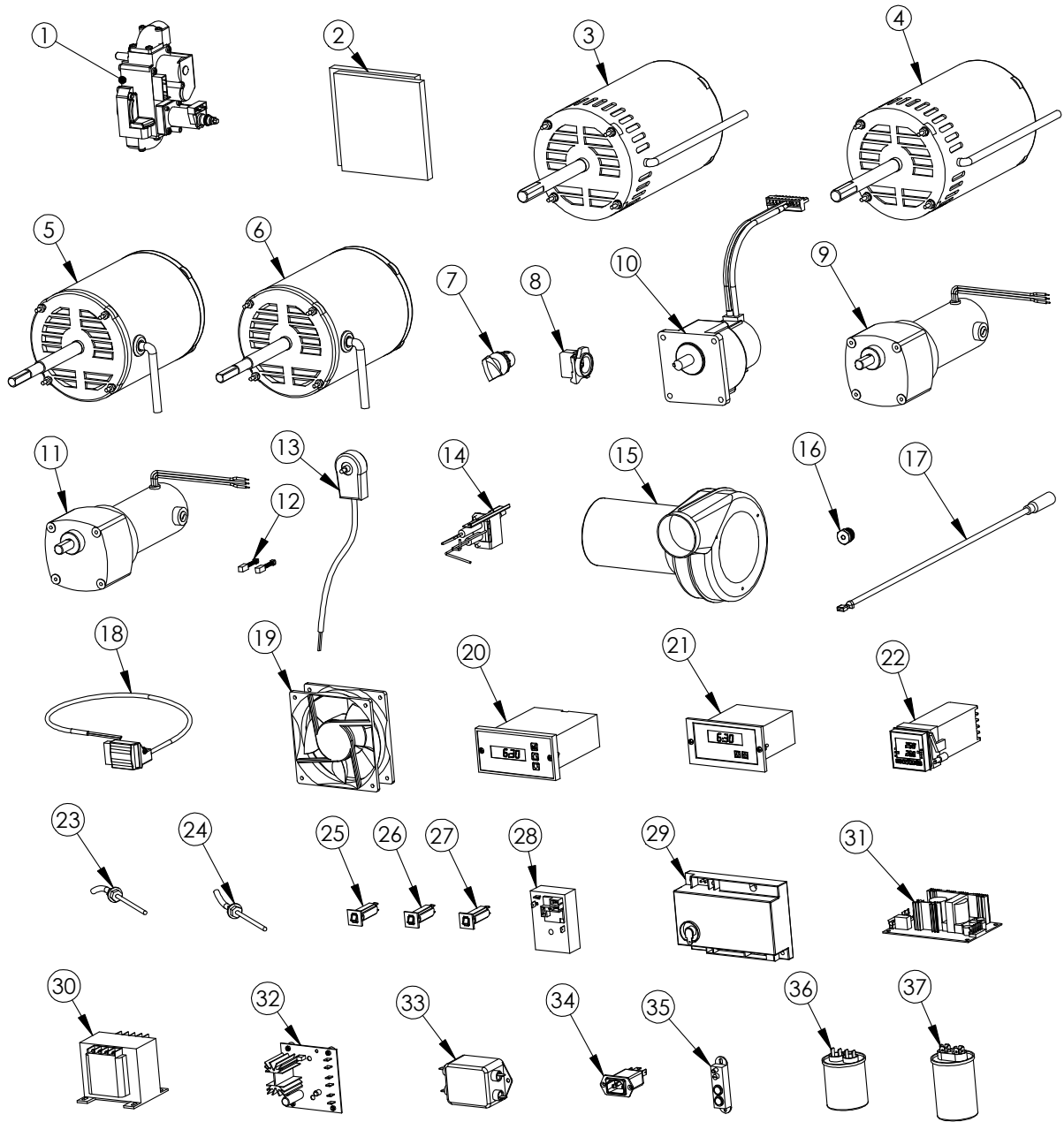


Figure 7: Direct Ignition Burner, World Spare Parts

1.8 Direct Ignition Burner, World Spare Parts BOM

QUANTITIES ARE PER OVEN

ITEM NO.	PART NUMBER	DESCRIPTION	1832/2440/ 3240/3255/ 3270S/3855 NAT GAS	1832/2440/ 3240/3255/ 3270S/3855 PROP	3270/3870 NAT GAS	3270/3870 PROP
1	XA-4207-DI	COMBINATION GAS VALVE DI	1	1	2	2
2	XA-4504-20	FOAM FAN FILTERS (PKG OF 2)	1	1	2	2
3	XA-5016 (.75HP)-CCW	3/4HP MOTOR (CCW) ASSY.	1	1	1	1
4	XA-5016 (.75HP)-CW	3/4HP MOTOR (CW) ASSY.	--	--	1	1
5	XA-5016-CCW-W (.33HP)	1/3HP MOTOR CCW ASSY	1	1	1	1
6	XA-5016-CW-W (.33HP)	1/3HP MOTOR CW ASSY	--	--	1	1
7	XP-4101	SWITCH OPERATOR W/ NUT	1	1	1	1
8	XP-4102-1	CONTACT BLOCK, 1 POLE	1	1	1	1
9	XP-4117-05	CONVEYOR MOTOR, 5 RPM	1	1	1	1
10	XP-4117-12.5	CONVEYOR MOTOR 12.5 RPM	1*	1*	1*	1*
11	XP-4117-19	CONVEYOR MOTOR, 19 RPM	1**	1**	1**	1**
12	XP-4118	BRUSH KIT, BISON	1*	1*	1*	1*
13	XP-4120	CONVEYOR MOTOR PICK-UP	1*	1*	1*	1*
14	XP-4203-DI	DSI IGNITER/SENSOR ASSY	1	1	2	2
15	XP-4205-EX	COMB AIR MOTOR ASSY EXPORT	1	1	2	2
16	XP-4209-xxxx	ORIFICE, MAIN,	SEE ORIFICE CHART	SEE ORIFICE CHART	SEE ORIFICE CHART	SEE ORIFICE CHART
17	XP-4234	SPARK WIRE, SHORT	1	1	2	2
18	XP-4235	RECTIFIER PLUG	1	1	2	2
19	XP-4501-EX	FLOW PATH PRESSURE GENERATING FAN EX	1	1	2	2
20	XP-4507	CONVEYOR CONTROL	1*	1*	1*	1*
21	XP-4507-24-A	CONVEYOR SPEED CONTROL 24VDC	1*	1*	1*	1*
22	XP-4508	TEMPERATURE CONTROL GAS	1	1	2	2
23	XP-4509	THERMOCOUPLE, TYPE K, 48 INCH	1	1	1	1
24	XP-4510	THERMOCOUPLE, TYPE K, 105 INCH	--	--	1	1
25	XP-4515-CB-10A	10 AMP CIRCUIT BREAKER	1	1	2	2
26	XP-4515-CB-1A	1 AMP CIRCUIT BREAKER	1	1	1	1
27	XP-4515-CB-2A	2 AMP CIRCUIT BREAKER	4	4	6	6
28	XP-4704-EX	COOL DOWN TIMER, EXPORT	1	1	1	1
29	XP-4705-DI-EX	IGNITION CONTROL DI EXPORT	1	1	2	2
30	XP-4706-EX	24V 75VA TRANSFORMER EXPORT	1	1	2	2
31	XP-4706-PS1	POWER SUPPLY	1	1	1	1
32	XP-4710-DI	SIGNAL CONDITIONER DI	1	1	2	2
33	XP-4711	FILTER, PWR, CONT, CNVR, EX	1	1	1	1
34	XP-4712	FILTER, POWER, INLET, EX	1	1	1	1
35	XP-4713	SWITCH, LIMIT, HIGH TEMP, EX	1	1	2	2
36	XP-5014-2	12 MFD CAPACITOR	1	1	2	2
37	XP-5014-3	SH P2 CAPACITOR	1	1	2	2

* (2 EA) OF THESE PARTS IF THE OVEN HAS A SPLIT BELT CONVEYOR.
 ** The XM-4117-19 IS USED ON THE SPLIT BELT OVEN WITH THE XM-4117-05.

Figure 8: Direct Ignition Burner, World Spare Parts BOM

Item numbers 3 & 4 fan motors are not interchangeable with item numbers 5 & 6 fan motors. Verify which motor you have before ordering a replacement part. Item number 37 is used with item numbers 3 & 4 and item number 36 is used with item numbers 5 & 6.

Item numbers 12, 13 & 20 are used with the Bison conveyor motors, (item numbers 9 & 11) and item numbers 21 & 31 are used with the Brother conveyor motor, (item number 10). Verify which conveyor motor you have before ordering any of these replacement parts.

1.9 Direct Ignition Burner, Australian Spare Parts

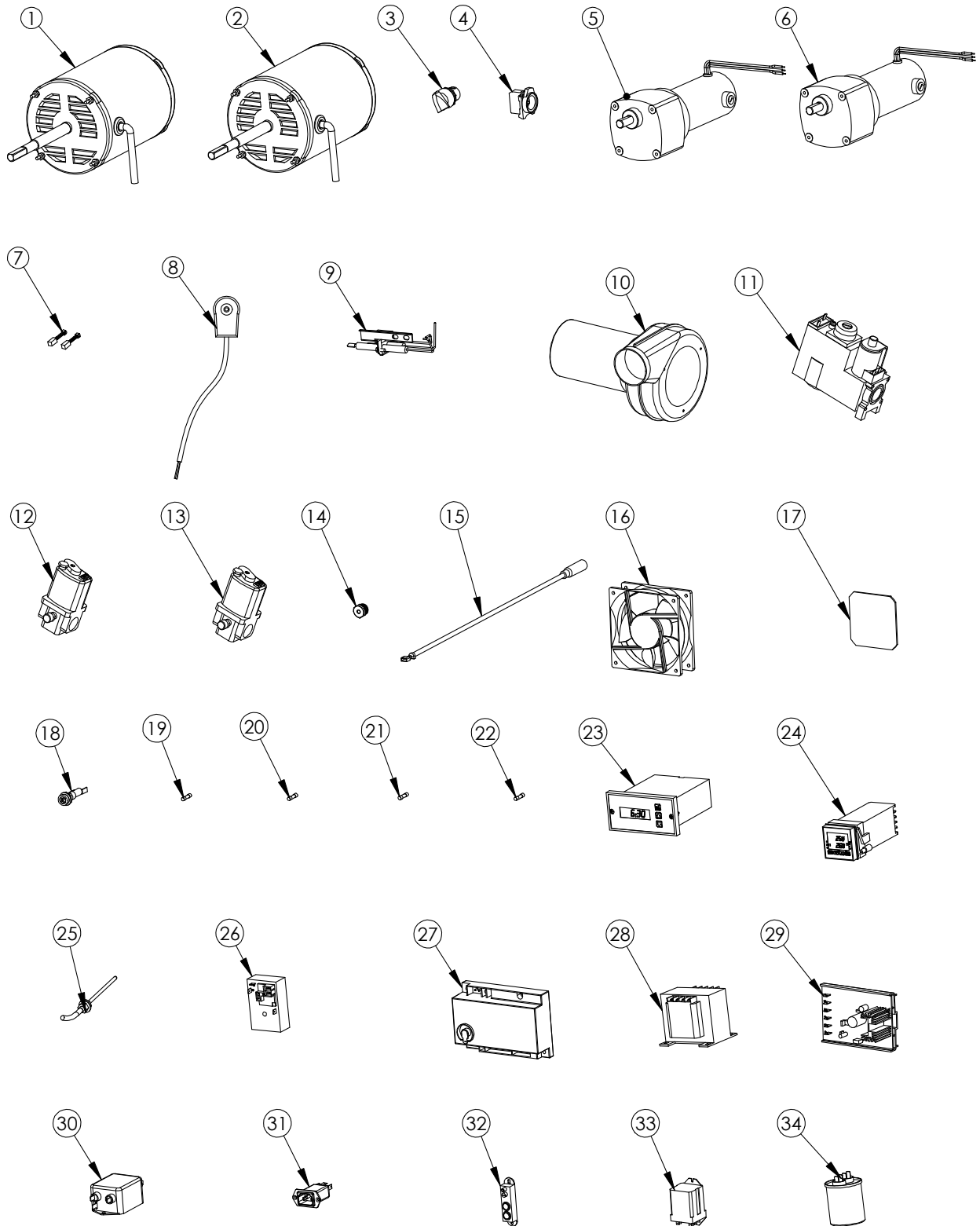


Figure 9: Direct Ignition Burner, Australian Spare Parts

1.10 Direct Ignition Burner, Australia Spare Parts BOM

AUSTRALIA DIRECT IGNITION BURNER OVEN			QUANTITIES ARE PER OVEN			
ITEM NO.	PART NUMBER	DESCRIPTION	1832/2440/ 3240/3255/ 3270S/3855 NAT GAS	1832/2440/ 3240/3255/ 3270S/3855 PROP	3270/3870 NAT GAS	3270/3870 PROP
1	XA-5016-CCW-W (.33HP)	1/3HP MOTOR CCW ASSY	1	1	1	1
2	XA-5016-CW-W (.33HP)	1/3HP MOTOR CW ASSY	--	--	1	1
3	XP-4101	SWITCH OPERATOR W/ NUT	1	1	1	1
4	XP-4102-1	CONTACT BLOCK, 1 POLE	1	1	1	1
5	XP-4117-05	CONVEYOR MOTOR, 5 RPM	1	1	1	1
6	XP-4117-19	CONVEYOR MOTOR, 19 RPM	1*	1*	1*	1*
7	XP-4118	BRUSH KIT, BISON	1	1	2	2
8	XP-4120	CONVEYOR MOTOR PICK-UP	1	1	2	2
9	XP-4203-DI	DSI IGNITER/SENSOR ASSY	1	1	2	2
10	XP-4205-EX	COMB AIR MOTOR ASSY EXPORT	1	1	2	2
11	XP-4207-DI-AE	COMBINATION VALVE, AUS	1	1	2	2
12	XP-4208-LP	MODULATING VALVE, PROPANE	1	1	2	2
13	XP-4208-NAT	MODULATING VALVE, NATURAL	1	1	2	2
14	XP-4209-xxxx	ORIFICE, MAIN,	SEE ORIFICE CHART	SEE ORIFICE CHART	SEE ORIFICE CHART	SEE ORIFICE CHART
15	XP-4234	SPARK WIRE, SHORT	1	1	2	2
16	XP-4501-EX	FLOW PATH PRESSURE GENERATING FAN EX	1	1	2	2
17	XP-4504-45	FLOW PATH PRESSURE GEN FAN FILTER 45 PPI	1	1	2	2
18	XP-4505-W	FUSE HOLDER EXPORT	8	8	14	14
19	XP-4506-GDA-400 MA	FUSE GDA-400 MA	1	1	2	2
20	XP-4506-GDC-6.3	FUSE GDC-6.3 AMP	1	1	2	2
21	XP-4506-GSB-1	FUSE GSB-1 AMP	3	3	5	5
22	XP-4506-GSB-2	FUSE GSB-2 AMP	3	3	6	6
23	XP-4507	CONVEYOR CONTROL	1**	1**	1**	1**
24	XP-4508	TEMPERATURE CONTROL GAS	1	1	2	2
25	XP-4509	THERMOCOUPLE, TYPE K, 48 INCH	1	1	1	1
26	XP-4704-EX	COOL DOWN TIMER, EXPORT	1	1	1	1
27	XP-4705-DI-EX	IGNITION CONTROL DI EXPORT	1	1	2	2
28	XP-4706-EX	24V 75VA TRANSFORMER EXPORT	1	1	2	2
29	XP-4710-M	SIGNAL CONDITIONER MAXITROL	1	1	2	2
30	XP-4711	FILTER, PWR, CONT, CNVR, EX	1	1	1	1
31	XP-4712	FILTER, POWER, INLET, EX	1	1	1	1
32	XP-4713	SWITCH, LIMIT, HIGH TEMP, EX	1	1	1	1
33	XP-4715	RELAY, DPDT 24VAC	1	1	2	2
34	XP-5014-2	12 MFD CAPACITOR	1	1	2	2

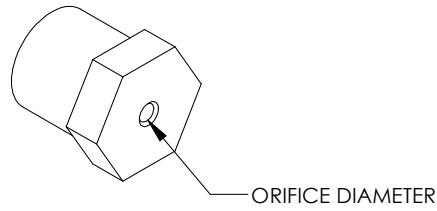
* The XM-4117-19 IS USED ON THE SPLIT BELT OVEN WITH THE XM-4117-05.

** (2 EA) OF THESE PARTS IF THE OVEN HAS A SPLIT BELT CONVEYOR.

Figure 10: Direct Ignition Burner, Australia Spare Parts BOM

2 Orifice Charts

2.1 Orifice chart for Direct Ignition & Quiet Fire Burners

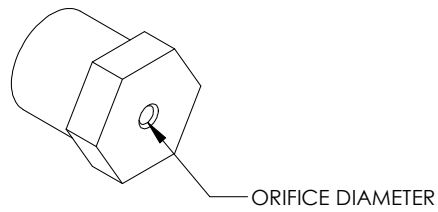


NATURAL GAS		
OVEN MODEL	ORIFICE PART NO.	ORIFICE DIAMETER in. / mm
1832	XM-4309-131	.131 / 3.33
2440	XM-4309-146	.146 / 3.71
3240	XM-4309-170	.170 / 4.32
3255	XM-4309-219	.219 / 5.56
3270S	XM-4309-219	.219 / 5.56
3270	XM-4309-161	.161 / 4.09
3855	XM-4309-219	.219 / 5.56
3870	XM-4309-161	.161 / 4.09

PROPANE GAS		
OVEN MODEL	ORIFICE PART NO.	ORIFICE DIAMETER in. / mm
1832	XM-4309-082	.082 / 2.08
2440	XM-4309-090	.090 / 2.29
3240	XM-4309-103	.103 / 2.62
3255	XM-4309-129	.129 / 3.28
3270S	XM-4309-129	.129 / 3.28
3270	XM-4309-099	.099 / 2.52
3855	XM-4309-129	.129 / 3.28
3870	XM-4309-099	.099 / 2.52

Figure 11: Orifice Part Number & Diameter Chart (DI & Quiet Fire burners)

2.2 Orifice Chart for Direct Ignition Burners (Australia only)



NATURAL GAS		
OVEN MODEL	ORIFICE PART NO.	ORIFICE DIAMETER in. / mm
1832	XP-4209-1832-NAT	.140 / 3.56
2440	XP-4209-2440-NAT	.156 / 3.96
3240	XP-4209-3240-NAT	.182 / 4.62
3255	XP-4209-3255-NAT	.234 / 5.94
3270	XP-4309-xx70-NAT	.173 / 4.39
3870	XP-4209-xx70-NAT	.173 / 4.09

PROPANE GAS		
OVEN MODEL	ORIFICE PART NO.	ORIFICE DIAMETER in. / mm
1832	XP-4209-1832-PRO	.088 / 2.24
2440	XP-4209-2440-PRO	.096 / 2.44
3240	XP-4209-3240-PRO	.110 / 2.79
3255	XP-4209-3255-PRO	.144 / 3.66
3270	XP-4209-xx70-PRO	.104 / 2.64
3870	XP-4209-xx70-PRO	.104 / 2.64

Figure 12: Orifice Part Number & Diameter Chart (DI Burners-Australia)

3 Finger Configurations

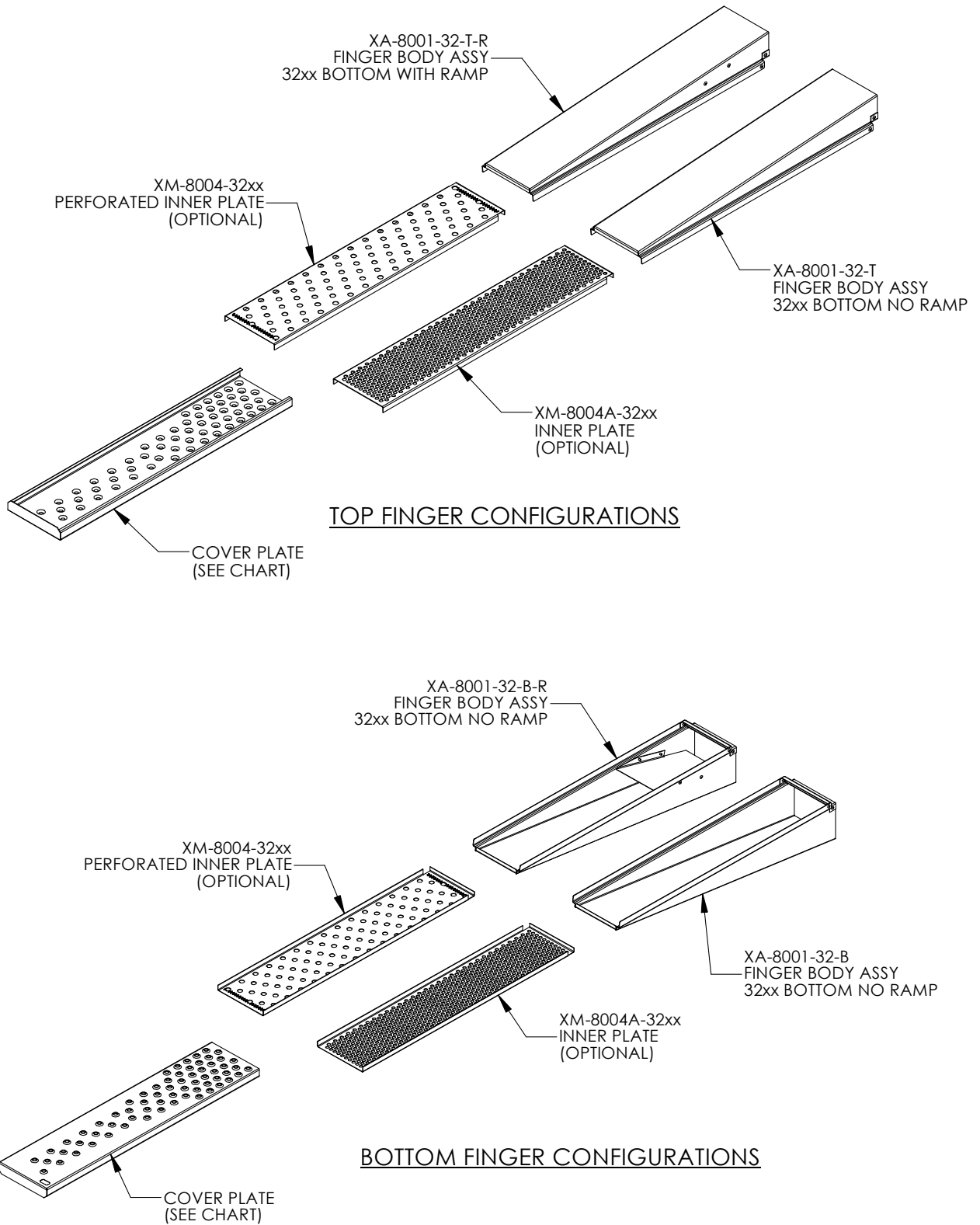


Figure 13: Top & Bottom Finger Configurations

3.1 Finger Outer Covers

FINGER COVERS FOR 1832 OVENS

18xx FINGER OUTER COVERS		
PART NO.	DESCRIPTION	HOLE DIA
XM-8101	18xx 7/16 TS3 FINGER OUTER	7/16"
XM-8551	18xx 4 ROW STD 7/16 FINGER OUT	7/16"
XM-8561	18xx 4 ROW VAR 3/8 FINGER OUT	3/8"
XM-8591	18xx 6 ROW STD 7/16 FINGER OUT	7/16"
XM-8611	18xx 6 ROW VAR 7/16 FINGER OUT	7/16"

FINGER COVERS FOR 2440 OVENS

24xx FINGER OUTER COVERS		
PART NO.	DESCRIPTION	HOLE DIA
XM-8201	24xx 7/16 TS3 FINGER OUTER	7/16"
XM-8602	24xx 6 ROW VAR 3/8 FINGER OUT	3/8"

FINGER COVERS FOR 3240, 3255 & 3270 OVENS

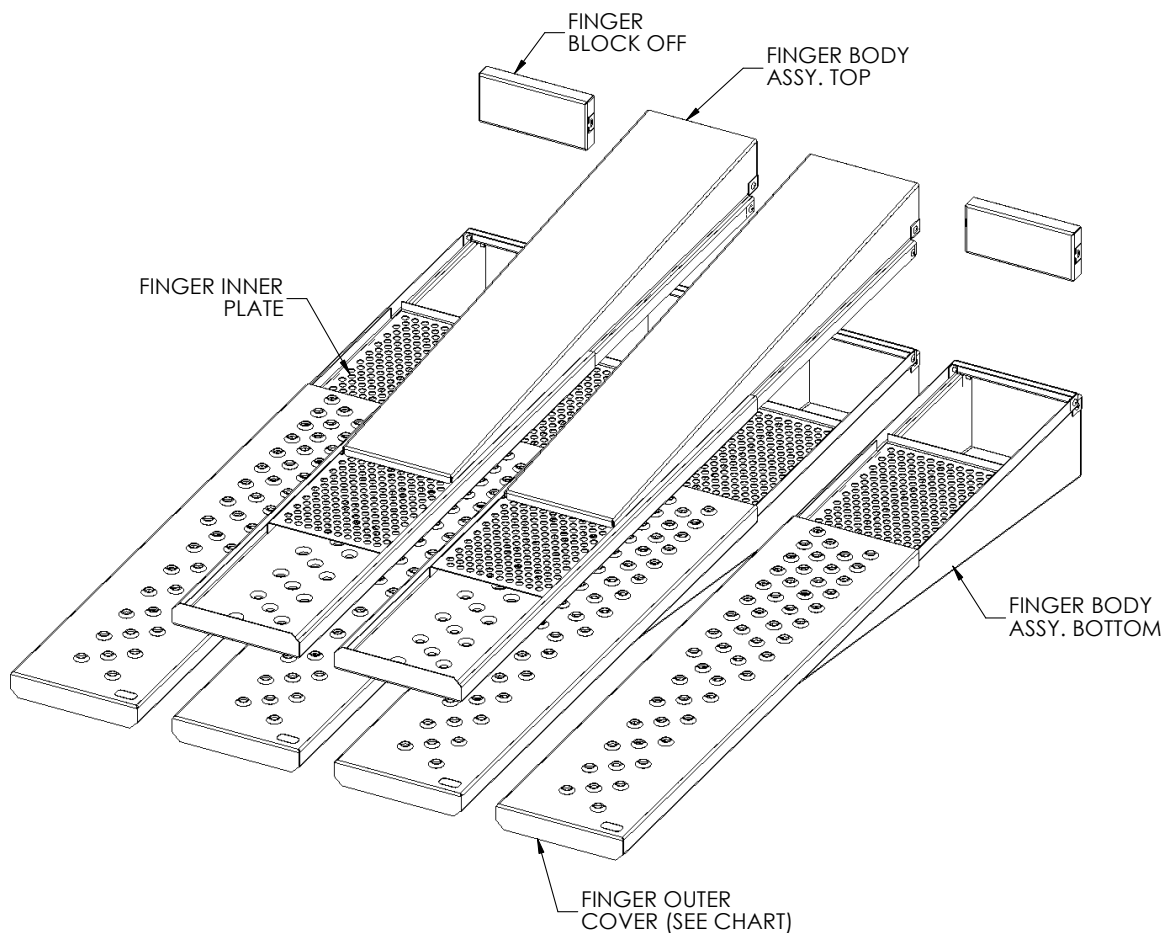
32xx FINGER OUTER COVERS		
PART NO.	DESCRIPTION	HOLE DIA
XM-8301	32xx 7/16 TS3 FINGER OUTER	7/16"
XM-8302	3240 3/8 FINGER OUT	3/8"
XM-8303	3240 7/16 FINGER OUT	7/16"
XM-8517	32xx 2 R + STD 7/16 FINGER OUT	7/16"
XM-8523	32xx 2 ROW VAR 3/8 FINGER OUT	3/8"
XM-8543	32xx 4 ROW STD 3/8 FINGER OUT	3/8"
XM-8553	32xx 4 ROW STD 7/16 FINGER OUT	7/16"
XM-8557	32xx 4 R + STD 7/16 FINGER OUT	7/16"
XM-8563	32xx 4 ROW VAR 3/8 FINGER OUT	3/8"
XM-8573	32xx 4 ROW VAR 7/16 FINGER OUT	7/16"
XM-8593	32xx 6 ROW STD 7/16 FINGER OUT	7/16"
XM-8603	32xx 6 ROW VAR 3/8 FINGER OUT	3/8"
XM-8613	32xx 6 ROW VAR 7/16 FINGER OUT	7/16"
XM-8493	32xx BLANK FINGER OUT	N/A

FINGER COVERS FOR 3855 & 3870 OVENS

38xx FINGER OUTER COVERS		
PART NO.	DESCRIPTION	HOLE DIA
XM-8401	38xx 7/16 TS3 FINGER OUTER	7/16"
XM-8604	38xx 6 ROW VAR 3/8 FINGER OUT	3/8"

Figure 14: Finger Outer Cover Chart

3.2 Finger Arrangements



TYPICAL FINGER ARRANGEMENT

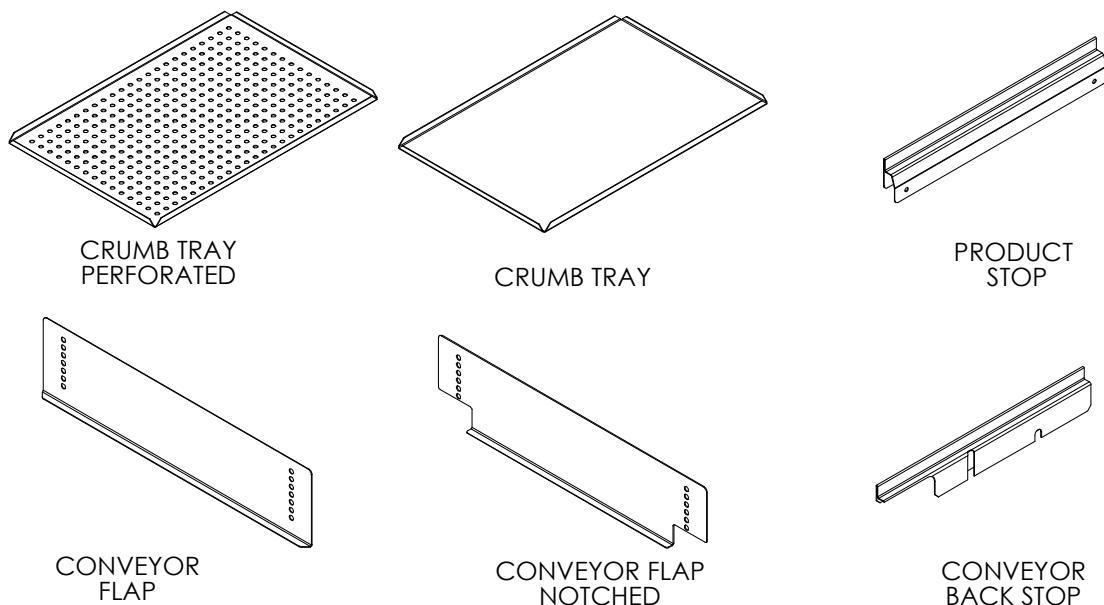
OVEN MODEL	FINGER BODY ASSY. TOP	FINGER BODY ASSY. BOTTOM	FINGER INNER PLATE (OPTIONAL)	FINGER INNER PLATE (OPTIONAL)
1832	XA-8001-18-T	XA-8001-18-B	XM-8004-18xx	--
2440	XA-8001-24-T	XA-8001-24-B	XM-8004-24xx	--
3240	XM-8001-32-T	XM-8001-32-B	XM-8004-32xx	XM-8004A-32xx
3240	XM-8001-32-T-R	XM-8001-32-B-R	XM-8004-32xx	XM-8004A-32xx
3255	XM-8001-32-T	XM-8001-32-B	XM-8004-32xx	XM-8004A-32xx
3255	XM-8001-32-T-R	XM-8001-32-B-R	XM-8004-32xx	XM-8004A-32xx
3270S/3270	XM-8001-32-T	XM-8001-32-B	XM-8004-32xx	XM-8004A-32xx
3270S/3270	XM-8001-32-T-R	XM-8001-32-B-R	XM-8004-32xx	XM-8004A-32xx
3855	XM-8001-38-T	XM-8001-38-B	--	--
3870	XM-8001-38-T	XM-8001-38-B	--	--
ALL	XM-8009S	FINGER BLOCK-OFF		

Figure 15: Typical Finger arrangement

Wolfe Electric, Inc. can assist you with configuring your oven finger arrangement to help maximize your cooking needs. Contact: Wolfe Electric, Inc. Customer Service at 1-888-443-2751.

4 Accessories

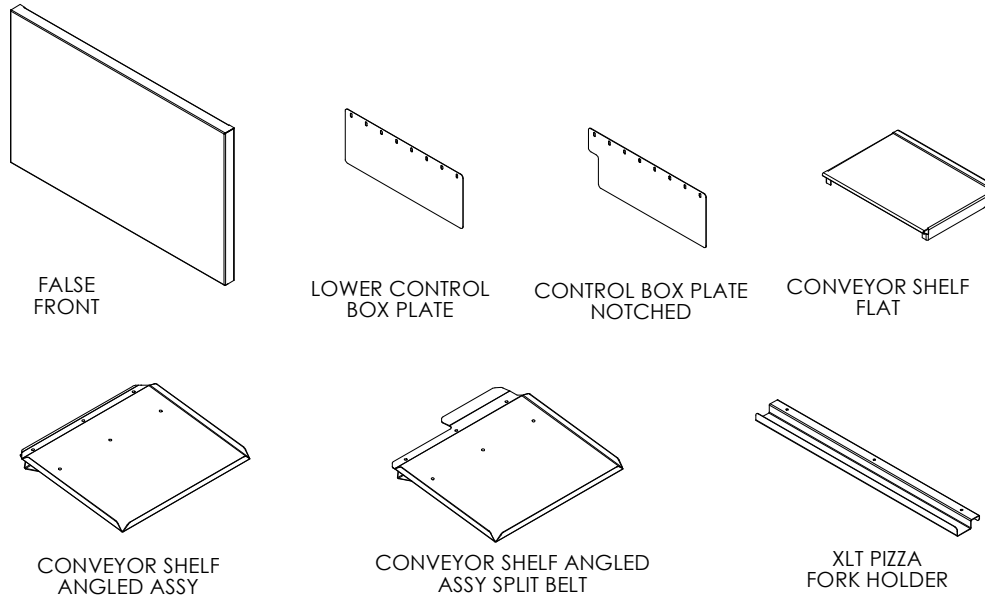
4.1 Accessories: Crumb Trays, Conveyor Flaps, Product Stops



MODEL	DESCRIPTION	PART NO.
1832	CRUMB TRAY 18xx PERFORATED	XM-9501-18xx-PERF
2440	CRUMB TRAY 24xx PERFORATED	XM-9501-24xx-PERF
3240, 3255, 3270	CRUMB TRAY 32xx PERFORATED	XM-9501-32xx-PERF
3855, 3870	CRUMB TRAY 38xx PERFORATED	XM-9501-38xx-PERF
1832	CRUMB TRAY 18xx	XM-9501-18xx
2440	CRUMB TRAY 24xx	XM-9501-24xx
3240, 3255, 3270	CRUMB TRAY 32xx	XM-9501-32xx
3855, 3870	CRUMB TRAY 38xx	XM-9501-38xx
1832	PRODUCT STOP	XM-9502-18xx
2440	PRODUCT STOP	XM-9502-24xx
3240, 3255, 3270	PRODUCT STOP	XM-9502-32xx
3855, 3870	PRODUCT STOP	XM-9502-38xx
1832	CONVEYOR FLAP 18xx	XM-9510-18
2440	CONVEYOR FLAP 24xx	XM-9510-24
3240, 3255, 3270	CONVEYOR FLAP 32xx	XM-9510-32
3855, 3870	CONVEYOR FLAP 38xx	XM-9510-38
1832	CONVEYOR FLAP 18xx NOTCHED	XM-9510-18N
2440	CONVEYOR FLAP 24xx NOTCHED	XM-9510-24N
3240, 3255, 3270	CONVEYOR FLAP 32xx NOTCHED	XM-9510-32N
3855, 3870	CONVEYOR FLAP 38xx NOTCHED	XM-9510-38N
ALL EXCEPT xx70	CONVEYOR BACK STOP	XM-9522
ALL EXCEPT xx70	CONVEYOR BACK STOP SPLIT BELT	XM-9522-SB

Figure 16: Crumb Trays, Conveyor Flaps, Product Stops

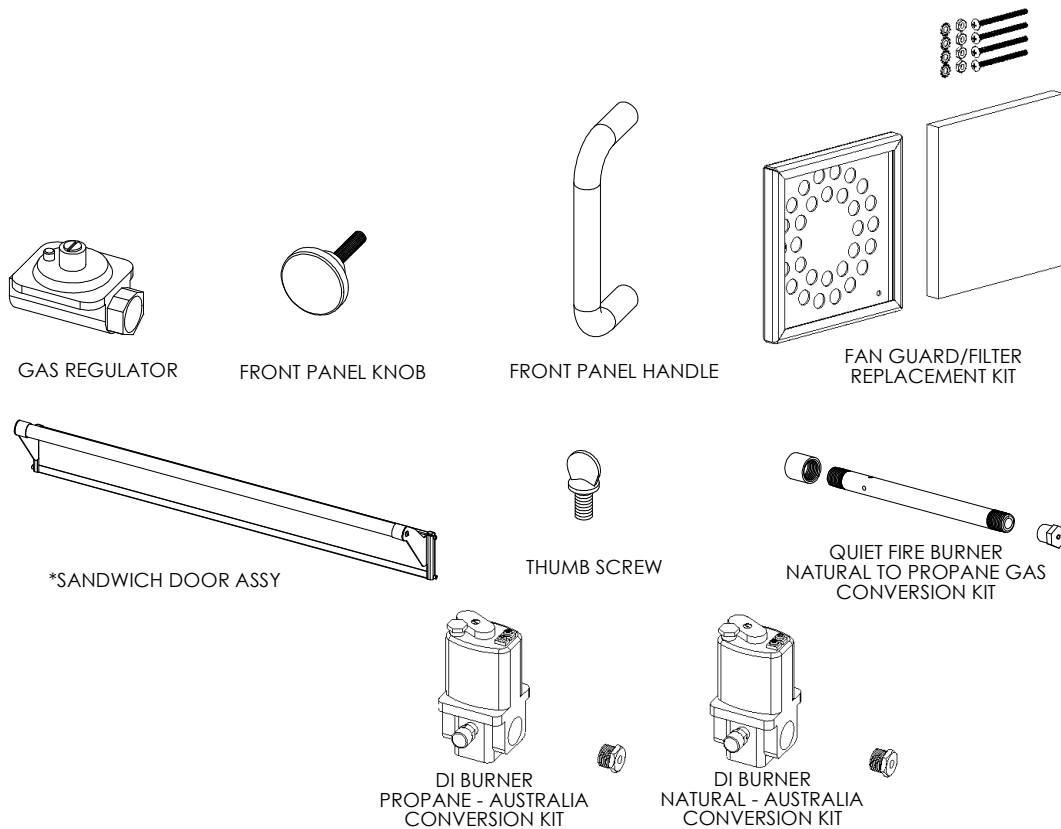
4.2 Accessories: False Front, Conveyor shelves, Control Box Plates, etc



MODEL	DESCRIPTION	PART NO.
1832	FALSE FRONT xx32	XM-9517-xx32
2440	FALSE FRONT xx40	XM-9517-xx40
3255, 3855	FALSE FRONT xx55	XM-9517-xx55
3270, 3870	FALSE FRONT xx70	XM-9517-xx70
ALL MODELS	LOWER CONTROL BOX PLATE RH	XM-9520
ALL MODELS	LOWER CONTROL BOX PLATE LH NOTCHED	XM-9520-LH-N
ALL MODELS	LOWER CONTROL BOX PLATE RH NOTCHED	XM-9520-RH-N
1832	CONVEYOR SHELF FLAT 18xx	XM-9521-18
2440	CONVEYOR SHELF FLAT 24xx	XM-9521-24
3240, 3255, 3270	CONVEYOR SHELF FLAT 32xx	XM-9521-32
3855, 3870	CONVEYOR SHELF FLAT 38xx	XM-9521-38
1832	CONVEYOR SHELF ANGLED 18xx ASSY	XA-9531-18
2440	CONVEYOR SHELF ANGLED 24xx ASSY	XA-9531-24
3240, 3255, 3270	CONVEYOR SHELF ANGLED 32xx ASSY	XA-9531-32
3855, 3870	CONVEYOR SHELF ANGLED 38xx ASSY	XA-9531-38
1832	CONVEYOR SHELF ANGLED 18xx ASSY SPLIT BELT	XA-9531-18-SB
2440	CONVEYOR SHELF ANGLED 24xx ASSY SPLIT BELT L TO R	XA-9531-24-SB-LR
2440	CONVEYOR SHELF ANGLED 24xx ASSY SPLIT BELT L TO R	XA-9531-24-SB-RL
ALL MODELS	FORK HOLDER	XM-9524

Figure 17: False Front, Conveyor shelves, Control Box Plates, etc

4.3 Accessories: Sandwich Door, Front Panel Knob, Conversion Kits, etc

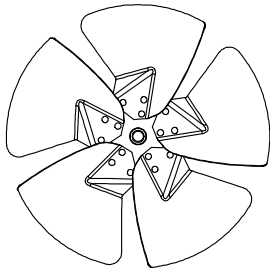


MODEL	DESCRIPTION	PART NO.
ALL MODELS	FRONT PANEL KNOB	X-6505
ALL MODELS	FRONT PANEL HANDLE	XP-6506
ALL MODELS	GAS REGULATOR	XP-9950-001
ALL MODELS	SANDWICH DOOR ASSY, LONG W/STAINLESS STEEL HANDLE	*XA-6600-L-SS
ALL MODELS	SANDWICH DOOR ASSY, LONG W/WOOD HANDLE	*XA-6600-L-W
ALL MODELS	SANDWICH DOOR ASSY, SHORT W/STAINLESS STEEL HANDLE	*XA-6600-S-SS
ALL MODELS	SANDWICH DOOR ASSY, SHORT W/WOOD HANDLE	*XA-6600-S-W
ALL MODELS	THUMB SCREW	XF-117
ALL GAS MODELS	FAN GUARD/FILTER REPLACEMENT KIT	XA-4520
QUIET FIRE BURNER OVENS	QUIET FIRE BURNER NATURAL TO PROPANE GAS CONVERSION KIT	**XA-9912-xxxx-QF
DI BURNER (AUSTRALIA)	PROPANE GAS CONVERSION KIT	**XA-9910-xxxx-E
DI BURNER (AUSTRALIA)	NATURAL GAS CONVERSION KIT	**XA-9911-xxxx-E

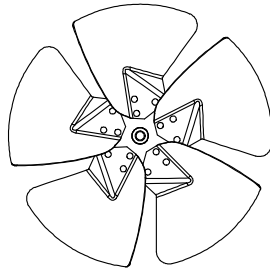
Figure 18: Sandwich Door, Front Panel Knob Conversion Kits, etc

*See Figure 21 on page 23 for Sandwich Door Assembly breakdown. ** "xxxx" Stands for oven model, ie 1832, 2440, etc... See Figure 22 and Figure 23 on page 24 and Figure 24 on page 25 for Conversion Kit Installations.

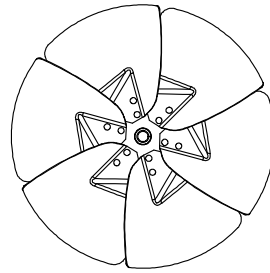
4.4 Accessories: Fan Assemblies



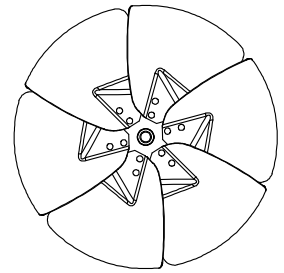
16" FAN-5 BLADE
CCW (TYPE B)



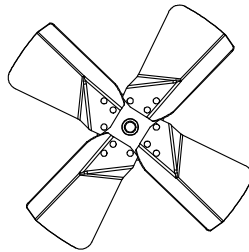
16" FAN-5 BLADE
CW (TYPE B)



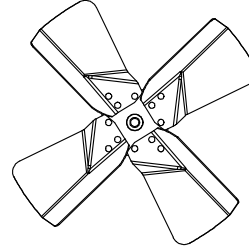
16" FAN-6 BLADE
CCW (TYPE B)



16" FAN-6 BLADE
CW (TYPE B)



16" FAN-4 BLADE
CCW (TYPE A)

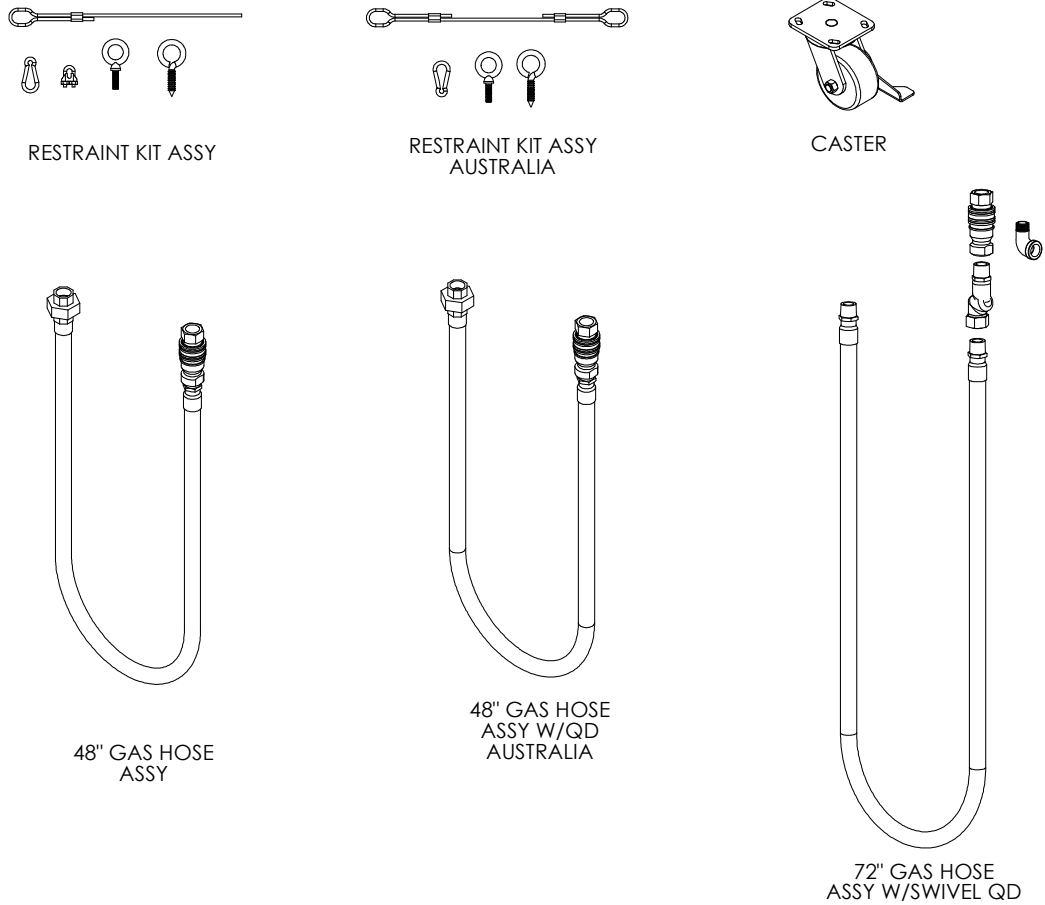


16" FAN-4 BLADE
CW (TYPE A)

PART NO.	DESCRIPTION
XA-5200-B16-5-625-CCW	16" DIA FAN ASSY (CCW) (TYPE B - 5 BLADE) (FOR 3/4HP MOTOR)
XA-5200-B16-5-500-CCW	16" DIA FAN ASSY (CCW) (TYPE B - 5 BLADE) (FOR 1/3HP MOTOR)
XA-5200-B16-5-625-CW	16" DIA FAN ASSY (CW) (TYPE B - 5 BLADE) (FOR 3/4HP MOTOR)
XA-5200-B16-5-500-CW	16" DIA FAN ASSY (CW) (TYPE B - 5 BLADE) (FOR 1/3HP MOTOR)
XA-5200-B16-6-625-CCW	16" DIA FAN ASSY (CCW) (TYPE B - 6 BLADE) (FOR 3/4HP MOTOR)
XA-5200-B16-6-625-CW	16" DIA FAN ASSY (CW) (TYPE B - 6 BLADE) (FOR 3/4HP MOTOR)
XA-5200-A16-4-500-CCW	16" DIA FAN ASSY (CCW) (TYPE A - 4 BLADE) (FOR 1/3HP MOTOR)
XA-5200-A16-4-625-CW	16" DIA FAN ASSY (CW) (TYPE A - 4 BLADE) (FOR 3/4HP MOTOR)
XA-5200-A16-4-500-CW	16" DIA FAN ASSY (CW) (TYPE A - 4 BLADE) (FOR 1/3HP MOTOR)
XA-5200-A16-4-625-CCW	16" DIA FAN ASSY (CCW) (TYPE A - 4 BLADE) (FOR 3/4HP MOTOR)

Figure 19: Fan Assemblies

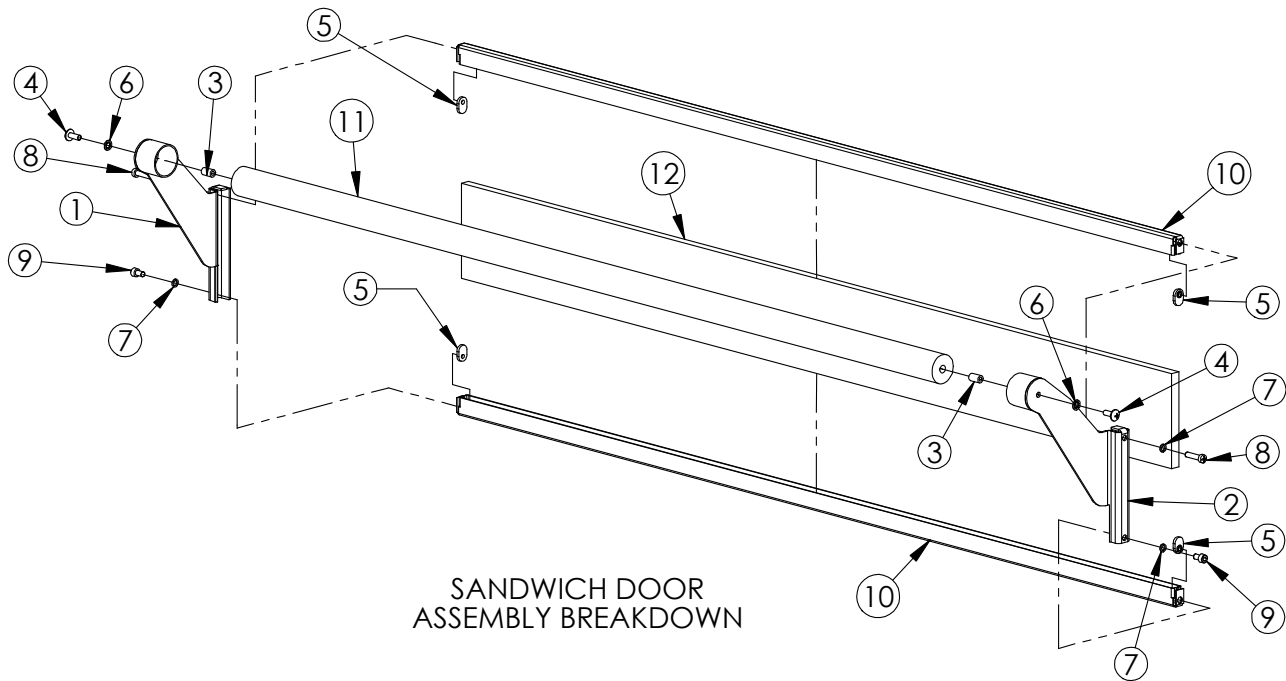
4.5 Accessories: Restraint Kits, Caster, Gas Hose Assy's



PART NO.	DESCRIPTION
XA-0407	RESTRAINT KIT ASSY
XA-0407-AE	RESTRAINT KIT ASSY AUSTRALIA
XP-1004	CASTER
XP-0401	48" GAS HOSE ASSY W/QD
XP-0402-AE	48" GAS HOSE ASSY W/QD AUSTRALIA
XP-0401	72" GAS HOSE ASSY W/SWIVEL QD

Figure 20: Restraint Kits, Caster, Gas Hose Assy's

4.6 Sandwich Door Assembly Breakdown



ITEM NO.	PART NO.	DESCRIPTION	QTY.
1	XA-6603-2	SHORT HANDLE SUB ASM LH	1
2	XA-6604-2	SHORT HANDLE SUB ASM RH	1
3	XF-100	10-24 STEEL KNIFE THREAD INSERT	2
4	XF-124	SCR, TRH, 10-24x1/2, SS	2
5	XF-131	NUT, WELD, 10-32, SS	4
6	XF-132	WSHR, LOCK, INTL TTH, #10, SS	2
7	XF-155	WSHR, LOCK, SPLIT, #10, SS	4
8	XF-156	10-32x3/4 SS FILISTER PHILLIPS HEAD SCREW	2
9	XF-164	10-32 x .313 SS SOC HD CAP SCREW	2
10	XM-6610-L	SAN DOOR TOP LONG	2
11	XM-6621-L-W	SAN DOOR HANDLE LONG WOOD	1
12	XP-6620-L	SANDWICH DOOR GLASS	1

ITEM NO.	PART NO.	DESCRIPTION	QTY
10	XM-6610-L	SANDWICH DOOR TOP LONG	2
10	XM-6610-S	SANDWICH DOOR TOP SHORT	2
11	XM-6621-L-SS	SAN DOOR HANDLE LONG WOOD	1
11	XM-6610-S-W	SAN DOOR HANDLE SHORT WOOD	1
11	XM-6621-L-SS	SAN DOOR HANDLE LONG STAINLESS STEEL	1
11	XM-6621-S-SS	SAN DOOR HANDLE SHORT STAINLESS STEEL	1
12	XP-6620-L	SANDWICH DOOR GLASS	1
12	XP-6620-S	SAN DOOR HANDLE LONGSTAINLESS STEEL	1

Figure 21: Sandwich Door Assembly Breakdown

5 Gas Conversion Kits

5.1 Convert From Natural Gas to Propane Gas (Quiet Fire Burner)

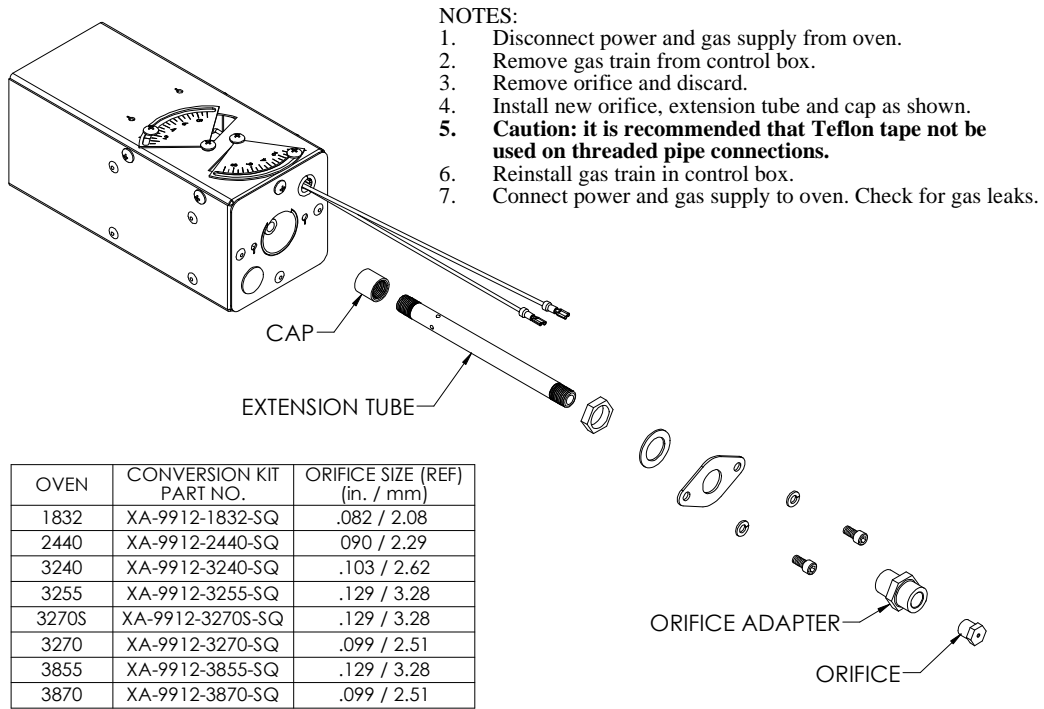


Figure 22: Propane Conversion Kit

5.2 Convert from Propane Gas to Natural Gas (Quiet Fire Burner)

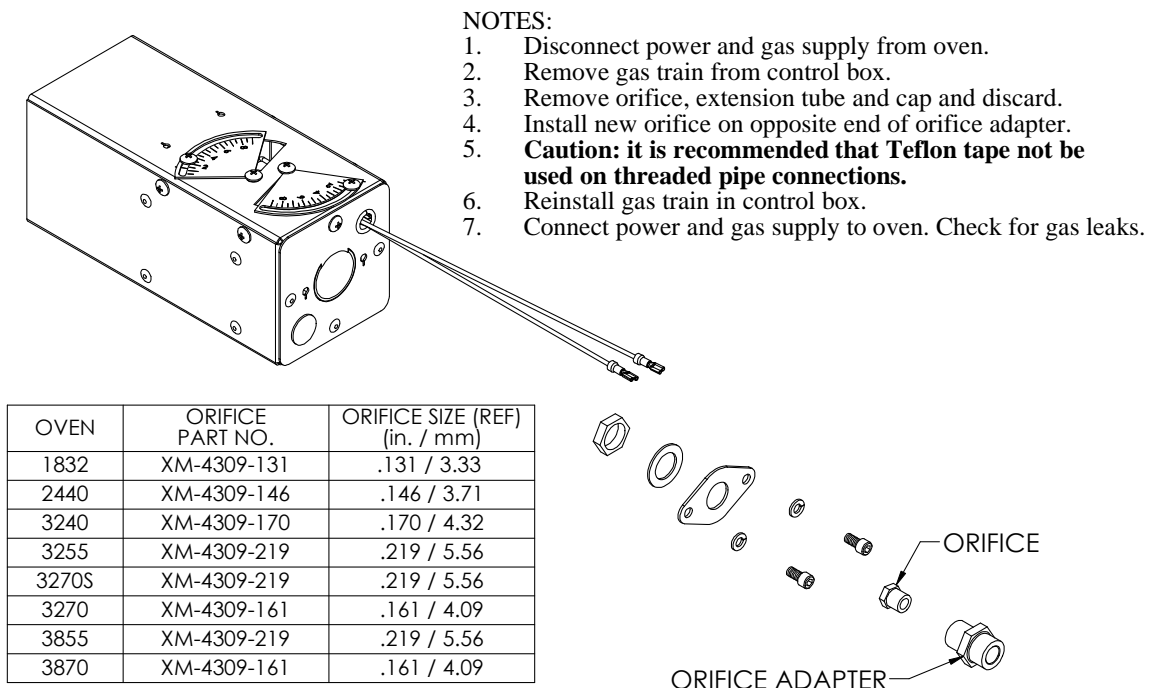
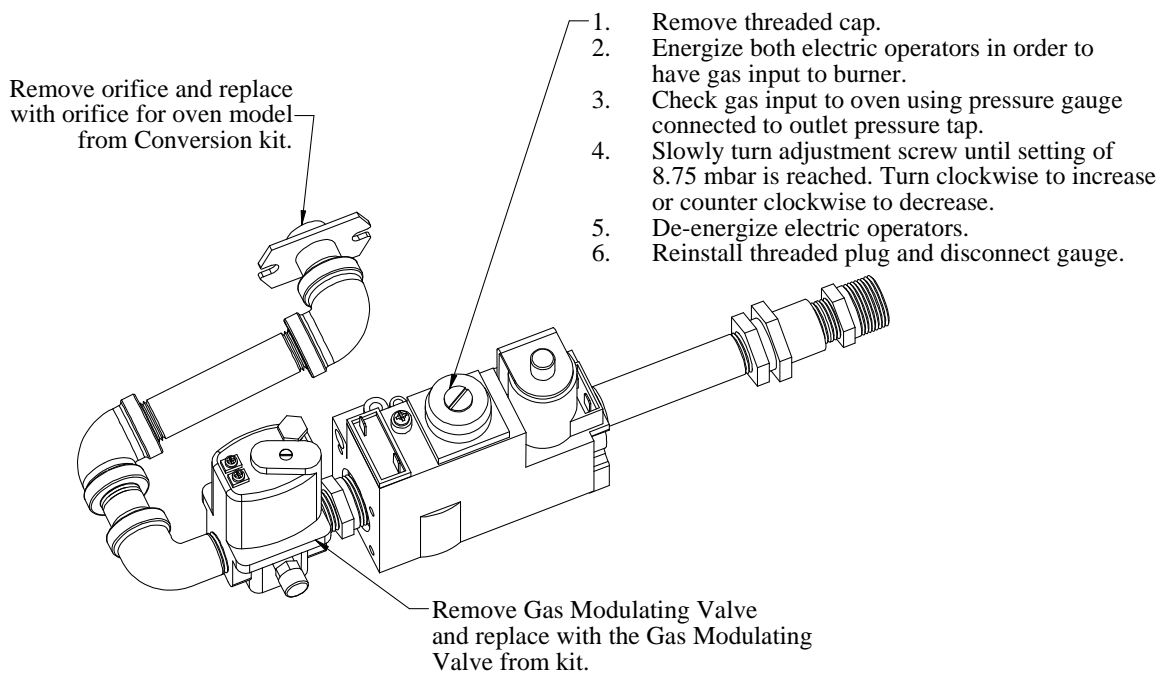


Figure 23: Natural gas Conversion Kit

5.3 Gas Conversion Kits for (Direct Ignition Burner-Australia)

1. Disconnect power and gas supply from oven.
2. Remove gas train from control box.
3. Replace orifice and Gas Modulating Valve as noted below.
4. Reinstall gas train in control box.
CAUTION: It is recommended that Teflon tape not be used.
5. Connect power and gas supply to oven. Check for gas leaks.
Adjust gas valve as noted below.

NATURAL GAS CONVERSION		
OVEN	CONVERSION KIT PART NO.	ORIFICE SIZE (REF) (in. / mm)
1832	XA-9911-1832-E	.140 / 3.56
2440	XA-9911-2440-E	.156 / 3.96
3240	XA-9911-3240-E	.182 / 4.62
3255	XA-9911-3255-E	.234 / 5.94
3270	XA-9911-3270-E	.173 / 4.39
3870	XA-9911-3870-E	.173 / 4.39



PROPANE CONVERSION		
OVEN	CONVERSION KIT PART NO.	ORIFICE SIZE (REF) (in. / mm)
1832	XA-9910-1832-E	.088 / 2.24
2440	XA-9910-2440-E	.096 / 2.44
3240	XA-9910-3240-E	.110 / 2.79
3255	XA-9910-3255-E	.144 / 3.66
3270	XA-9910-3270-E	.104 / 2.64
3870	XA-9910-3870-E	.104 / 2.64

Figure 24: Gas Conversion Kits for Direct Ignition Burner - Australia

This page was left
blank intentionally